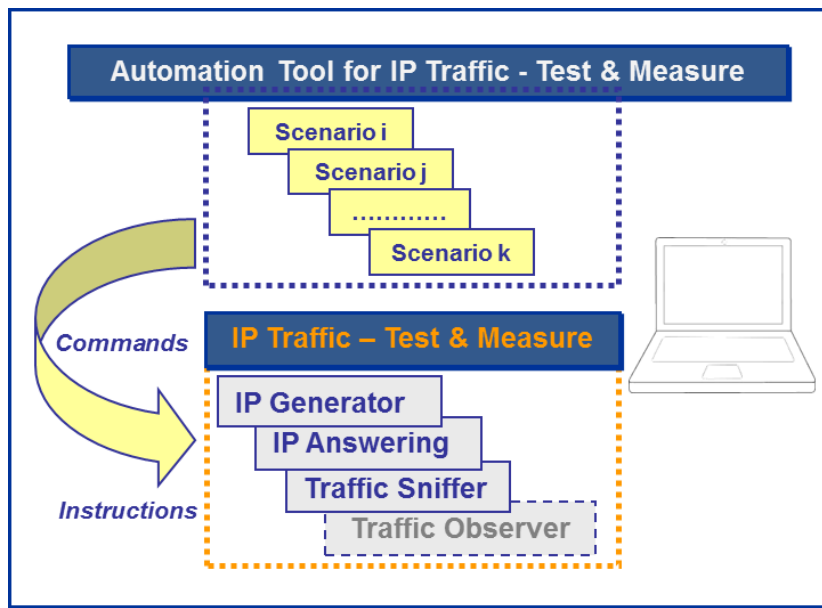


Automation Tool for IP Traffic - Test & Measure

Add-on to automate operations with "IP Traffic -Test & Measure" software



The *Automation Tool for "IP Traffic—Test & Measure"* software allows editing and executing scenarios to control and set parameters of the "IP Traffic – Test & Measure" software on the same PC.

A scenario is a succession of **commands** and **instructions**.

A **command** is used to set parameters and/or activate a function of the "IP Traffic – Test & Measure" software.

For example the '**Set and Start connection(s)**' command helps to set parameters for IP connections and to start the traffic on these connections. With such command, you specify the IP address, port number, protocol, packet size, inter packet delay, duration... and you start the traffic generation for these connections.

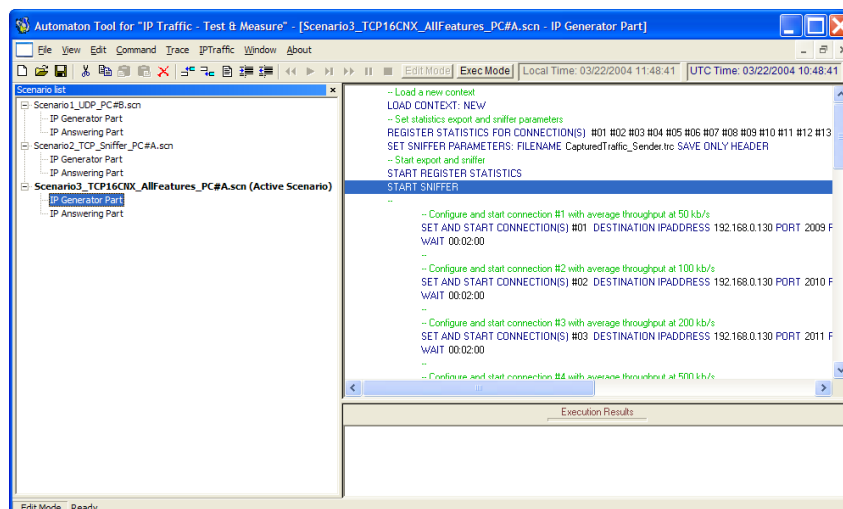
An **instruction** is used by the Automation Tool to realize an internal process. For example, the '**Wait Date/Time**' instruction suspends the scenario execution up to the specified date and time before to continue.

By using the "*Automation Tool for IP Traffic*", you can perform many tasks:

- set automatically the parameters of the "IP Traffic - Test & Measure" software
- start and stop IP connections based on timers
- start and stop traffic capture in user defined files
- execute the planned operations in accordance with your own timing
- automate the repetitive tests operations
- **simplify the tests reproduction**



From Windows XP to Windows 8 with 32-bit or 64-bit environment including XP, Vista, Seven, 8, 10, Server 2003, 2008 and 2012



Automation Tool for "IP Traffic - Test & Measure" / Edit Mode

Specifications are subject to change without notice. All products are trademarks or registered trademarks of their respective owners. Copyright © 2015 ZTI Communications.