

## NTP Network Time Server for high reliability applications

# Thunderbolt NTP TS200

### Thunderbolt NTP TS200 Time Server

The Protempis Thunderbolt® NTP TS200 Time Server is designed for demanding applications that require high accuracy NTP time stamping. The TS200 supports synchronization of thousands of workstations, routers, switches and other network elements for logging and security forensics. VOIP IPBX systems also require very accurate NTP timestamps to ensure CDR events are correctly registered and reported.

The Thunderbolt NTP TS200 supports multiple constellations GNSS, which enables tracking of GPS, GLONASS, and Beidou satellites enhancing redundancy and satellite availability.

### Industrial Applications

Automation systems and industrial environments that use SCADA or other network monitoring, measurement and control systems require high precision NTP reference to ensure reliable and accurate operations.

The NTP TS200 is optimized to deliver extremely stable and accurate time of day (TOD) synchronization for

a variety of time sensitive applications such as datacenters, SCADA systems and PMU synchronization.

### Ideal for Demanding Environments

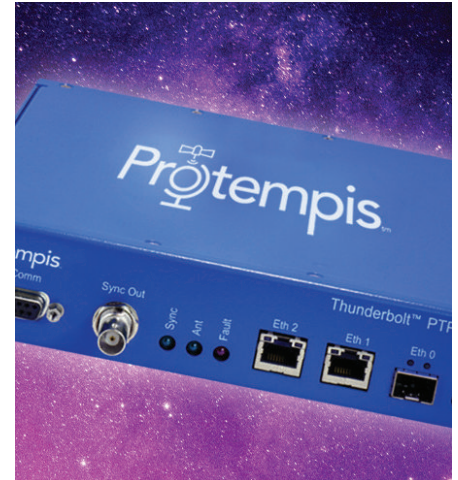
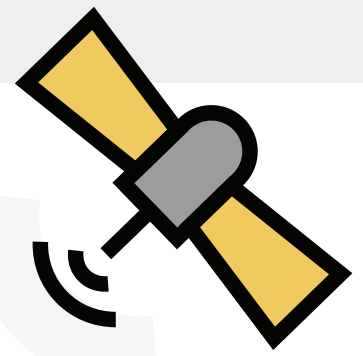
The Thunderbolt NTP TS200 leverages Protempis's decades of experience in GNSS systems with millions of timing devices integrated into telecommunications, digital broadcasting, computer networks and other industrial applications.

The NTP TS200 Time Server offers extended operating temperature ranges to ensure suitability for use in demanding environments.

The NTP TS200 supports a large number of clients making it suitable for medium and large scale deployment. The low cost per client of the TS200 helps reduce the total cost of deployment while maintaining superior reliability.

### Integration & Installation

The Protempis Thunderbolt NTP TS200 Clock offers AC and DC power options for easy deployment in all types of network environments.

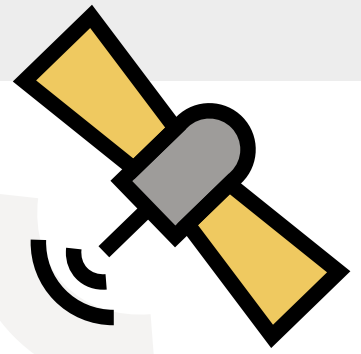


### Key Features

- NTP v4 Time Server
- Supports 2.5K transaction/second
- Multi-Constellation (GPS, GLONASS, Beidou & Galileo)
- 15ns time accuracy (GPS locked)
- Holdover of  $\pm 1.5\mu s$  over 4hours (constant temperature and when locked to GPS for 7 days)
- IPv4 and IPv6 Support
- Dedicated management port (1xRJ45)
- Network Management: SNMP, Web UI, CLI

### Disclaimer

Protempis does not assume any liability arising out of the application or use of any product described or shown herein nor does it convey any license under its patents, copyrights, or any rights of others. Licenses or any other rights such as, but not limited to, patents, utility models, trademarks or trade names, are neither granted nor conveyed by this document, nor does this document constitute any obligation of the disclosing party to grant or convey such rights to the receiving party.



## (Integration Con't)

Matching the NTP TS200 with Protempis rugged antennas such as the Protempis Bullet™ 360 provides reliable reference acquisition in challenging RF signal environments. Bullet 360 rugged antennas provide multi-GNSS capabilities so that critical applications can obtain high precision timing signals with the best reliability in the industry.

## General Specifications

Inputs: .....GNSS (GPS, GLONASS, Galileo & Beidou)  
Outputs: .....NTP, PPS, 10MHz  
Ethernet Ports: 1x Mgmt RJ45  
1x 1G SFP  
1x 1G RJ45  
GNSS Antenna .....SMA

### Protocols:

NTP, SNTP, IPv4, IPv6, Telnet, SFTP, SSH, RADIUS,  
TACACS+, SNMP, DAYTIME, TIME  
Network Management .....SNMPv2, HTTPS, CLI

### User Interfaces:

CLI .....Monitoring and Management  
Web UI .....Monitoring and Management

## Performance

Time of day accuracy .....15ns (1-sigma) from UTC  
Frequency accuracy ..... $1.16 \times 10^{-12}$  (one day ave.)  
Holdover ..... $< 1 \times 10^{-10}$  /24hrs

### Time accuracy

Tracking to PRC .....<15ns (locked)  
Holdover ..... $< \pm 1.5 \mu\text{s}$ /4hrs (7 days locked)  
NTPv4 Stratum-1 server configuration .....2500 tps  
Surveyed accuracy .....<3m Horizontal, <5m Vertical

## Physical Characteristics

Dimensions in cm (L x W x H) .....20.8 x 20 x 4.4  
(19" half-rack x 1U)  
Weight .....< 3Kg (6 lb)

## Power

DC Power, dual feed .....-36VDC to -72VDC  
AC Power .....110V / 220 V (adapter incl.)  
Current consumption .....330mA (max)  
Power consumption .....5W average, 10W maximum

## Regulatory & Standards

### Operating Conditions

Temperature .....-40°C to +85°C  
Humidity ..5%-95% RH non-condensing (+60°C)  
Storage Temperature .....-55°C to +105°C

### Safety & Environmental:

UL / CSA 60950-1  
EN: 60950-1, 300019  
CE, CISPR22 class A  
GR-63; Level 3  
ETSI (EN55022/EN55024) EN 300019, Class T3.2  
Electrical .....EMC, ESD  
Immunity & susceptibility  
FCC Part 15 Class B / ICES 003 Class-B  
Korea KN32 / KN35 Class A  
EN .....301 489-1, EN 301 489-19 EN 303 413  
IEEE .....1613-1  
Telcordia .....GR-1089

### Synchronization

IETF .....NTPv4

### Product Compliant with following directive:

2014/53/EU (RED Directive)  
2011/65/EU (RoHS2 Directive)  
2012/19/EU (WEEE Directive)

Please go to [www.protempis.com](http://www.protempis.com) for the latest documentation and tools, part numbers and ordering information.

[www.protempis.com](http://www.protempis.com)

### Disclaimer

Protempis does not assume any liability arising out of the application or use of any product described or shown herein nor does it convey any license under its patents, copyrights, or any rights of others. Licenses or any other rights such as, but not limited to, patents, utility models, trademarks or trade names, are neither granted nor conveyed by this document, nor does this document constitute any obligation of the disclosing party to grant or convey such rights to the receiving party.